

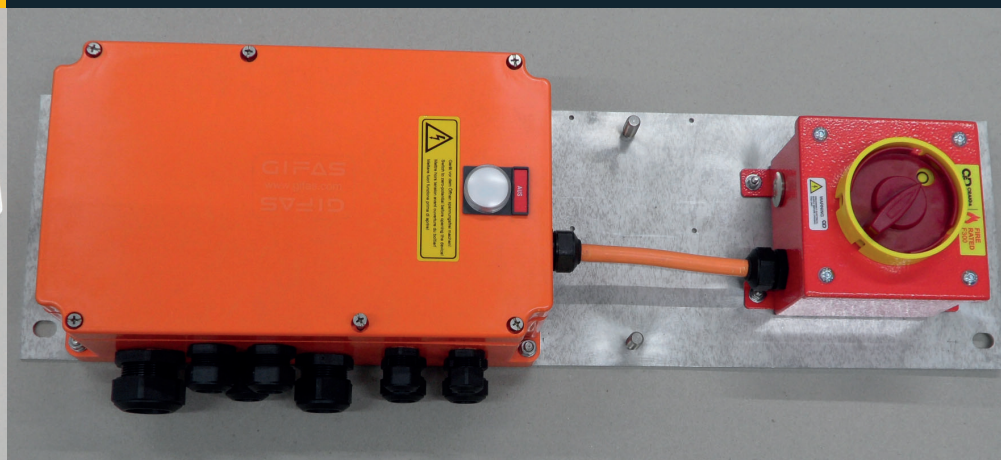
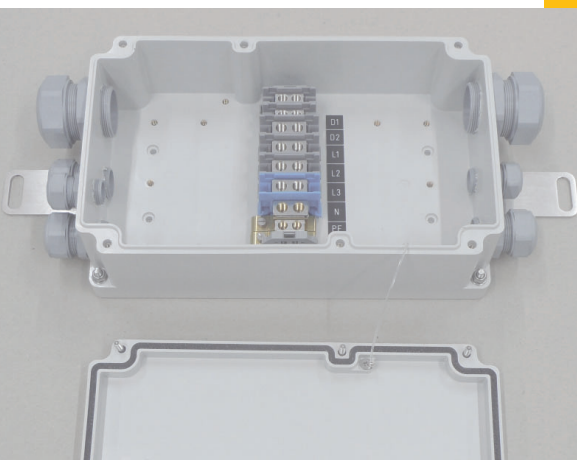
SYSTEMATIC QUALITY

Plastic junction and distribution boxes

GRP GLASS FIBRE REINFORCED POLYESTER



Product information



GIFAS
ELECTRIC

04 | 01

Introduction

Page 3

Introduction



Page 3

Polyester junction and distribution boxes GRP type 1616

Page 4

GRP type 1616

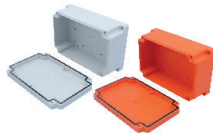


Page 4

Polyester junction and distribution boxes GRP type 2516

Page 5

GRP type 2516



Page 5

Polyester junction and distribution boxes GRP type 3018

Page 6

GRP type 3018

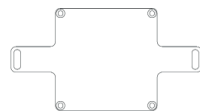


Page 6

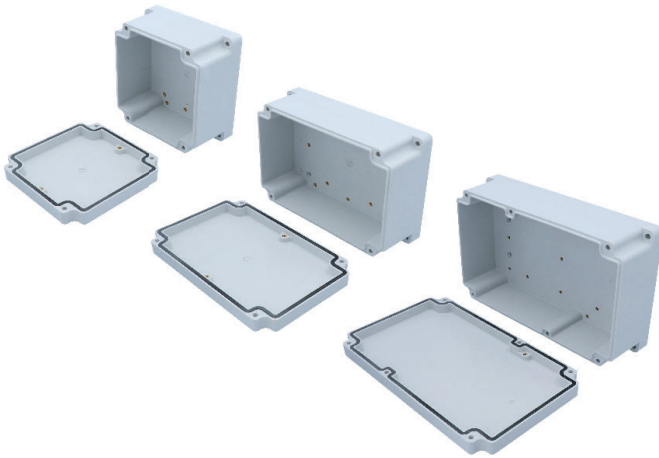
Accessories: mounting plates and brackets

Page 7

Accessories: mounting plates and brackets



Page 7



Glass fibre reinforced polyester junction and distribution boxes

Due to many customer requests we have extended our product range in collaboration with external specialists. We proudly present you our fiber-glass reinforced polyester junction boxes, which correspond to highest standards.

Besides our approved hard rubber product range we are now able to fulfill highest chemical and mechanical demands, especially for such systems as in tunnels, in civil engineering, and in chemical and petrochemical industry.

Junction boxes GREY, FE05

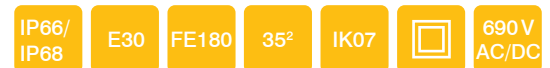
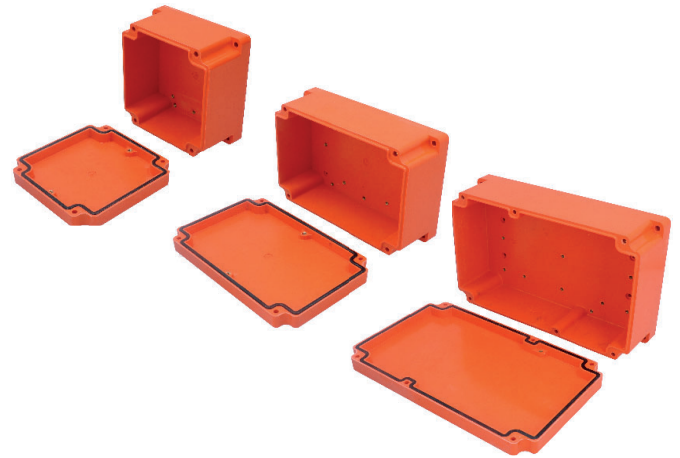
Design approved to IP66/68

Along to Test Report APM Technica: APM_BE_3301389 water and dust in accordance with DIN EN 60529:2014

As a result of the higher protection category and the certification according to DIN 4102 Part, the boxes are ideal for adaptive, lane and safety lighting, especially in the national road network and tunnels - individual equipment to customer requirements possible!

Special features

- safety insulated
- impact-resistant
- UV resistant - halogen free
- resistant to aging and temperature resistant
- resistant to oil and acid
- widely resistant to chemicals
- with 4 exterior assembly and fixing points
- max. equipment: screw terminals up to 35 mm²



Glass fibre reinforced polyester junction and distribution boxes fireproof

Due to many customer requests we have extended our product range in collaboration with external specialists. We proudly present you our fire-proof fiberglass reinforced polyester junction boxes, which correspond to highest standards.

Besides our approved hard rubber product range we are now able to fulfill highest chemical and mechanical demands, especially for such systems as in tunnels, in civil engineering, and in chemical and petrochemical industry.

Junction boxes ORANGE, E30

Design approved to IP66/68

Along to Test Report APM Technica: APM_BE_3301389 water and dust in accordance with DIN EN 60529:2014

Functional integrity E30 based on DIN 4102 part 12 E30

According to report MPA-Dresen 20190264 in accordance with DIN EN 1363-1; 2012-10

As a result of the higher protection category and the certification according to DIN 4102 Part, the boxes are ideal for adaptive, lane and safety lighting, especially in the national road network and tunnels - individual equipment to customer requirements possible!

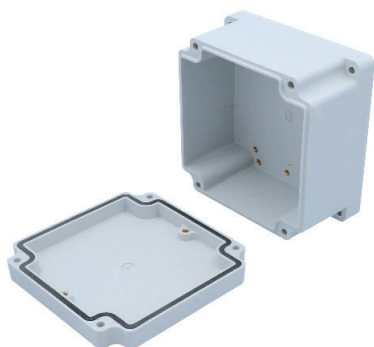
Special features

- safety insulated
- impact-resistant
- UV resistant - halogen free
- resistant to aging and temperature resistant
- resistant to oil and acid
- widely resistant to chemicals
- flame retardant, self-extinguishing
- non-flammable
- with 4 exterior assembly and fixing points
- max. equipment: screw terminals up to 35 mm²
- audited functional integrity of at least 30 minutes at temperatures up to 900°C.

Technical Data FE05

Specification box type 1616 FE05

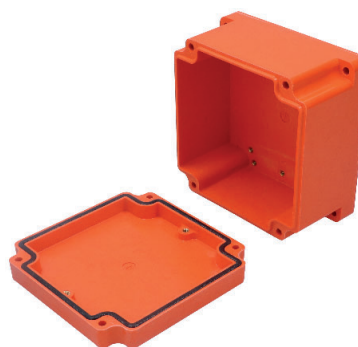
- junction box polyester glass fiber reinforced
- colour: grey RAL 7035
- protection category: IP68
- W×H×P: 160×160×100 mm



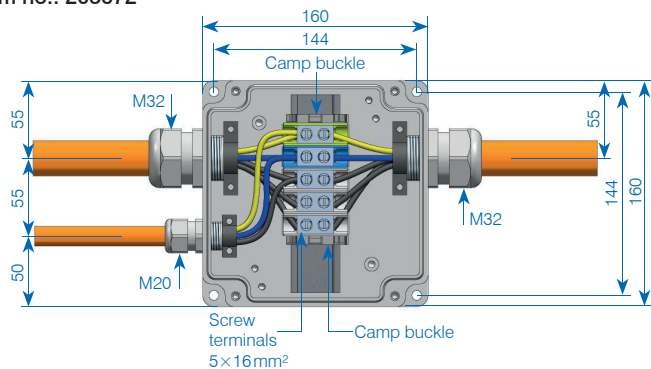
Technical Data E30

Specification box type 1616 FE180/E30

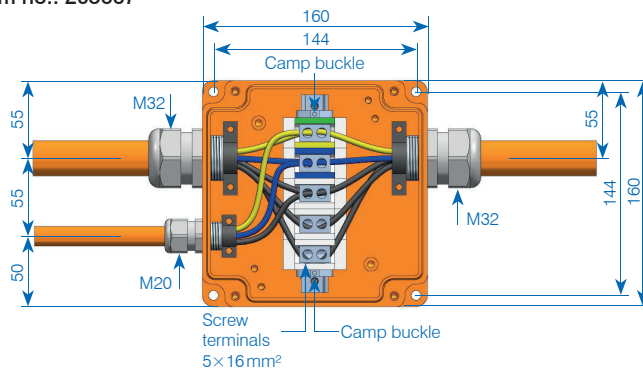
- junction box polyester enhanced glass fiber reinforced
- colour: orange RAL 2009
- protection category: IP68
- W×H×P: 160×160×100 mm



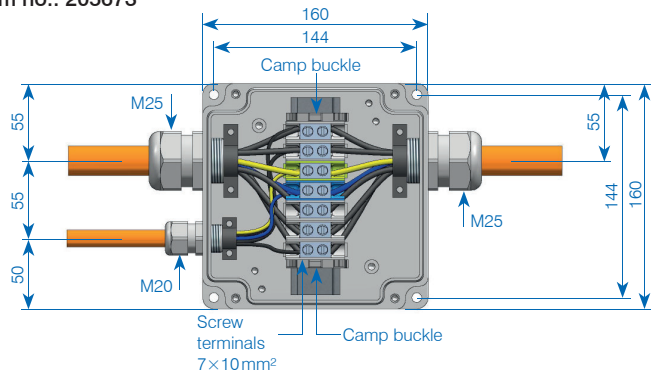
TBA 1616 – 160×160×100 mm / 5×16 mm²
Item no.: 205672



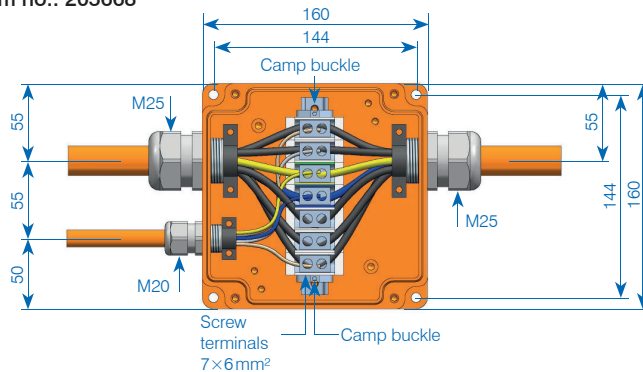
BFA 1616 – 160×160×100 mm / 5×16 mm²
Item no.: 205667



TBA 1616 – 160×160×100 mm / 7×10 mm²
Item no.: 205673



BFA 1616 – 160×160×100 mm / 7×6 mm²
Item no.: 205668



Polyester junction and distribution boxes GRP type 2516

Technical Data FE05

Specification box type 2516 FE05

- junction box polyester glass fiber reinforced
- colour: grey RAL 7035
- protection category: IP66
- W×H×P: 250×160×100mm



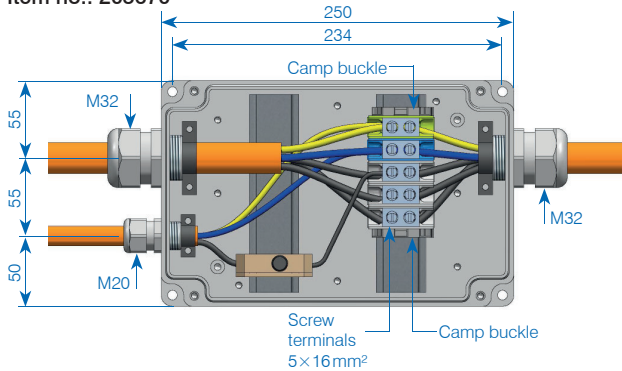
Technical Data E30

Specification box type 2516 FE180/E30

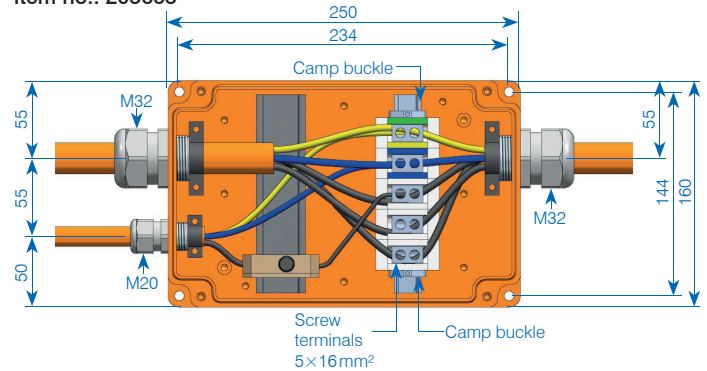
- junction box polyester enhanced glass fiber reinforced
- colour: orange RAL 2009
- protection category: IP66
- W×H×P: 250×160×100mm



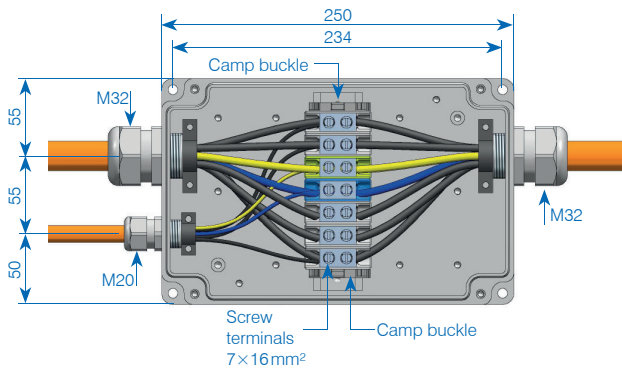
TBA 2516 – 250×160×100 mm / 5×16 mm²
Item no.: 205670



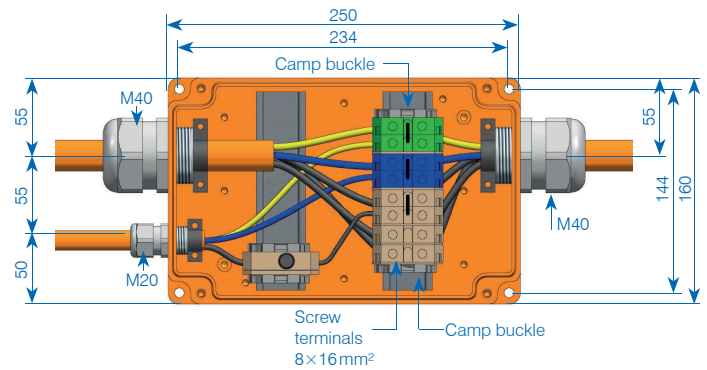
BFA 2516 – 250×160×100 mm / 5×16 mm²
Item no.: 205665



TBA 2516 – 250×160×100 mm / 7×16 mm²
Item no.: 205671



BFA 2516 – 250×160×100 mm / 8×16 mm²
Item no.: 205666



Technical Data FE05

Specification box type 3018 FE05

- junction box polyester glass fiber reinforced
- colour: grey RAL 7035
- protection category: IP66
- W×H×P: 300×180×100 mm



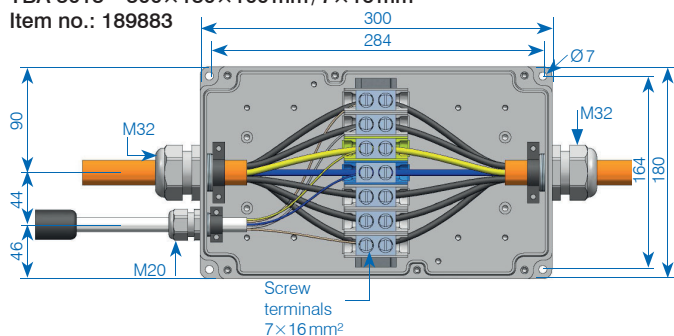
Technical Data E30

Specification box type 3018 FE180/E30

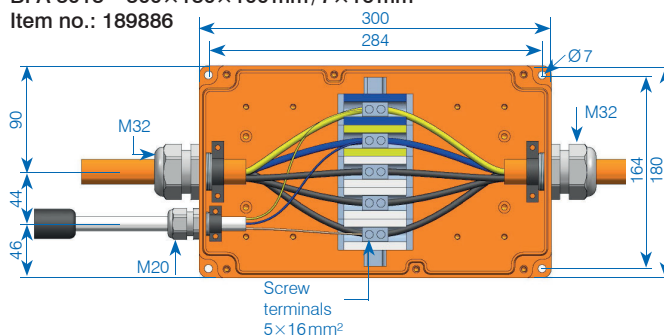
- junction box polyester enhanced glass fiber reinforced
- colour: orange RAL 2009
- protection category: IP66
- W×H×P: 300×180×100 mm



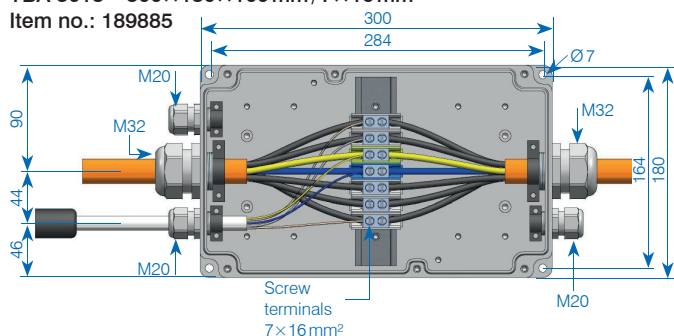
TBA 3018 – 300×180×100 mm / 7×16 mm²
Item no.: 189883



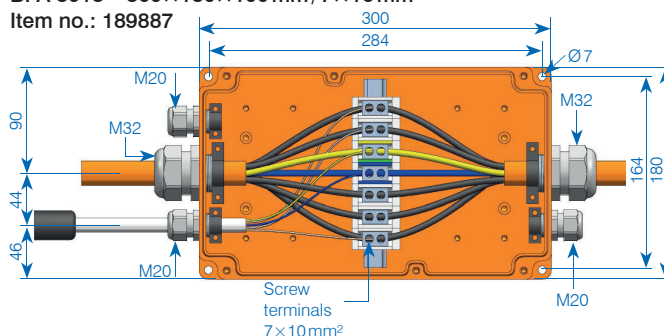
BFA 3018 – 300×180×100 mm / 7×16 mm²
Item no.: 189886



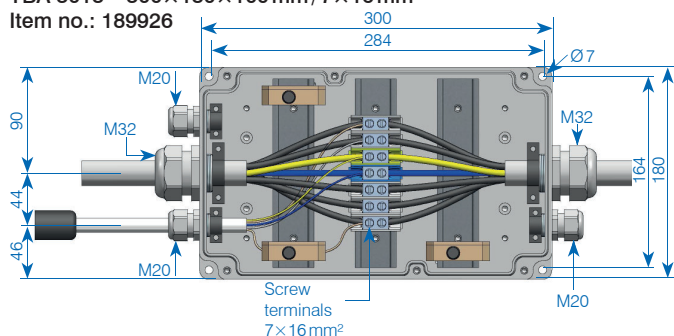
TBA 3018 – 300×180×100 mm / 7×16 mm²
Item no.: 189885



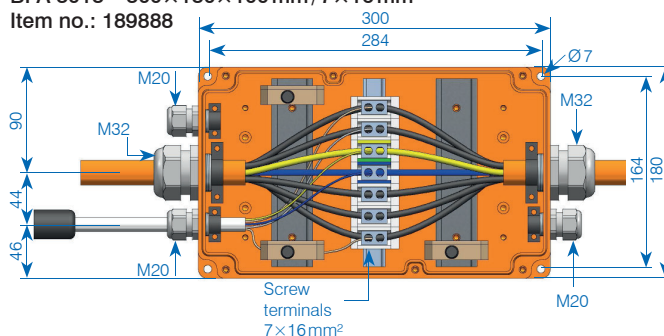
BFA 3018 – 300×180×100 mm / 7×16 mm²
Item no.: 189887



TBA 3018 – 300×180×100 mm / 7×16 mm²
Item no.: 189926



BFA 3018 – 300×180×100 mm / 7×16 mm²
Item no.: 189888



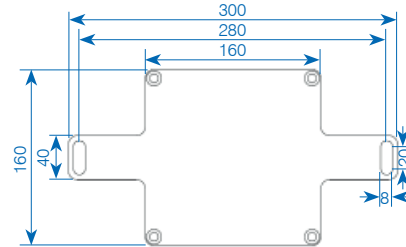
Accessories: mounting plates and brackets

Mounting plates and brackets

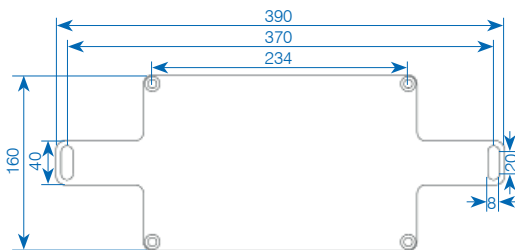
A large number of different mounting plates and brackets are available for quick and easy installation of the junction boxes on ducts, tunnel ceilings or mounting supports. It goes without saying that individual special solutions are possible.

Material in V4A stainless steel 14571 or as according to customer requirements.

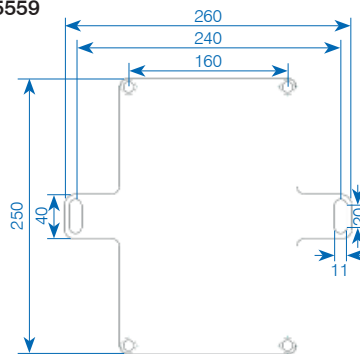
Mounting plate, crosswise, V4A stainless steel for type 1616 boxes Item no.: 207053



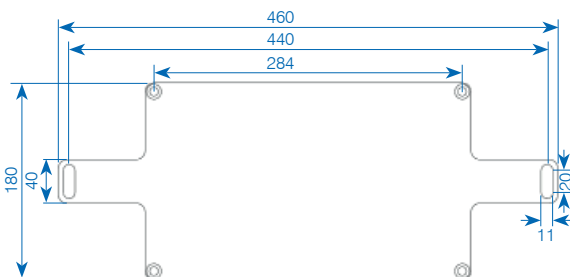
Mounting plate, crosswise, V4A stainless steel for boxes type 2516 Item no.: 207052



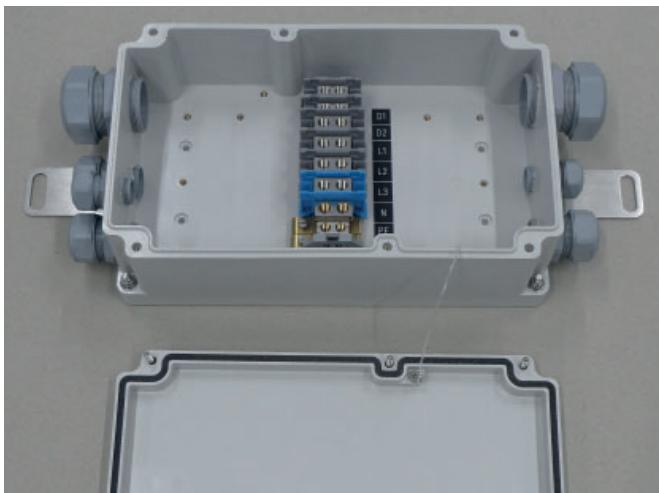
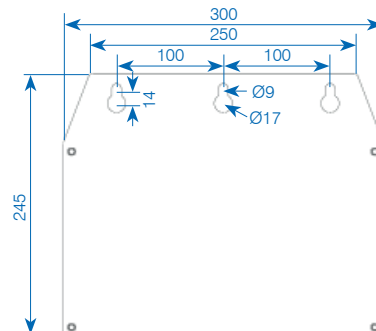
Mounting plate, vertical, V4A stainless steel for boxes type 2516 Item no.: 205559



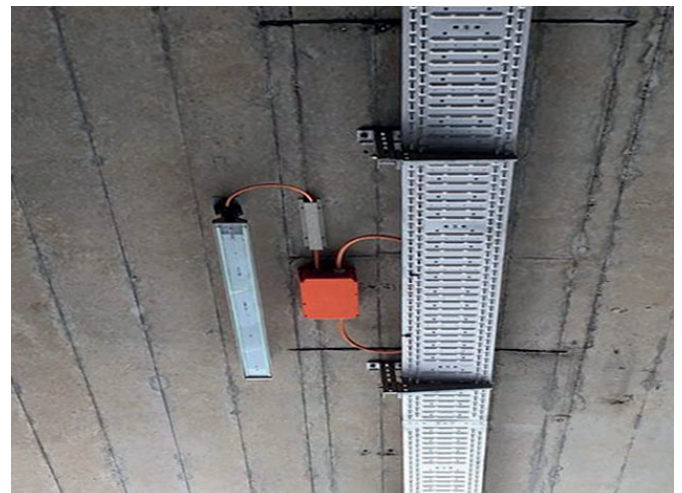
Mounting plate, crosswise, V4A stainless steel for boxes type 3018 Item no.: 189869



Mounting bracket, V4A stainless steel for boxes type 3018 Item no.: 206819



Junction box type 3018 in FE05 with through-wiring DALI



Typical example of an installation with adaptive lighting for emergency power system in FE180/E30

GET IN TOUCH WITH US

News about the assortment and specific solutions can be found on our website:

www.gifas.ch

We reserve the right to make technical modifications. V 0420



GIFAS
ELECTRIC

GIFAS-ELECTRIC GmbH Phone +41 71 886 44 44
Dietrich Strasse 2 Fax +41 71 886 44 49
P.O. Box 275 www.gifas.ch
CH-9424 Rheineck info@gifas.ch
Switzerland